



ALUMINIUM RAINWATER SYSTEMS

CASE STUDY

EALING ROAD,
WEMBLEY

At Stormguard Rainwater we were asked to provide the parapet copings to the main roofs, walkways, and all of the inset balconies across all three blocks of this prestigious Higgins Construction development. We were also asked to supply the soffits to all areas including the car park, walkways and balconies. Our aluminium was again used to create a fascia which was installed to the entrance canopies which ran around all three blocks to the ground floor. Various trims were also used throughout the project, and the installation was completed to a very high standard on a fantastic looking development.

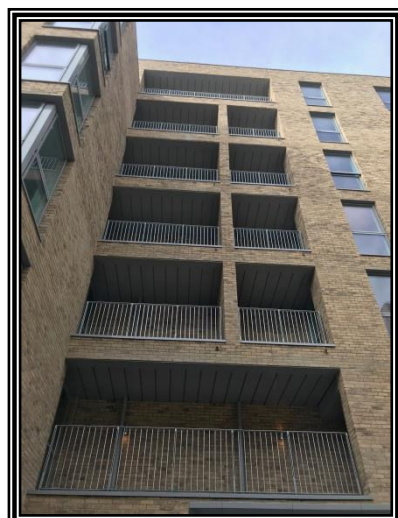
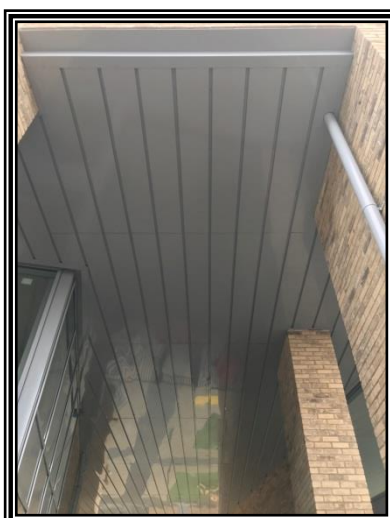
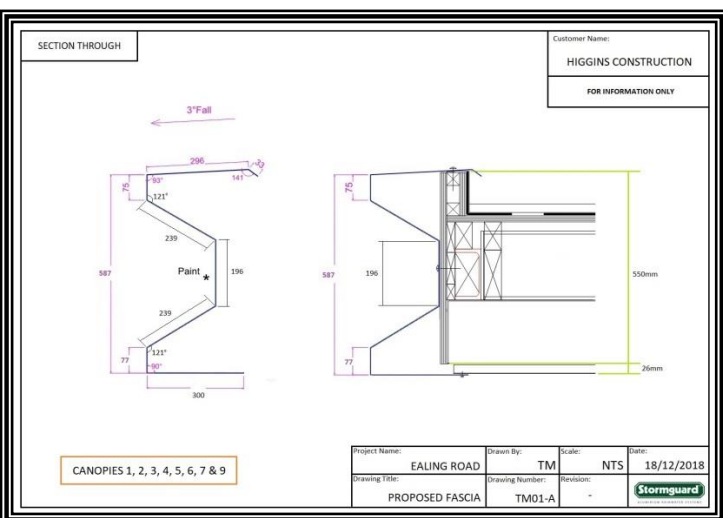
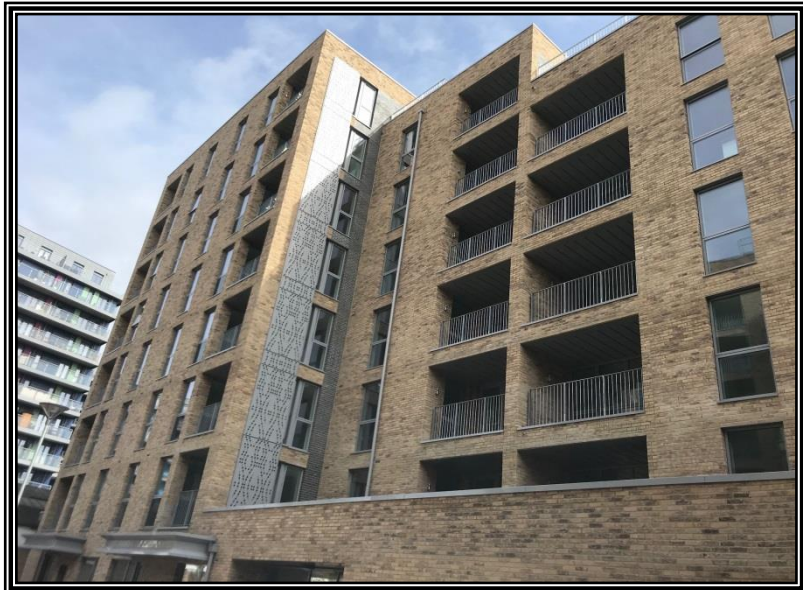
To assist Higgins with this project Stormguard Rainwater offered on site assistance at survey stage to make sure all the components needed to complete the works were accounted for, as well as supplying working drawings to the client for approval, and to aid the installation once the materials had arrived on site.

SPECIFICATION:

Size: Various profiles supplied.

Gauge: 2 & 3mm thick aluminium.

Colour: RAL 7004.



Augustus Mill,
Buckley Street,
Macclesfield. SK11 6UH

TEL: 01625 665096
FAX: 01625 665097

E-Mail: sales@stormguardrainwater.co.uk
Website: www.stormguardrainwater.co.uk