

ALUMINIUM RAINWATER SYSTEMS

CASE STUDY

1c, The Drive,
Walthamstow

At Stormguard Rainwater we were asked to provide the parapet copings, window head flashings, and balcony and walkway soffits to a new build block of flats. A secret fix 'snap' system was implemented for the parapet copings and after consultation with the projects architect, a top hat soffit system was agreed upon to the walkways, with the balcony soffits to line through with the laser cut panels to the front. Various trims were used to complete the installation.

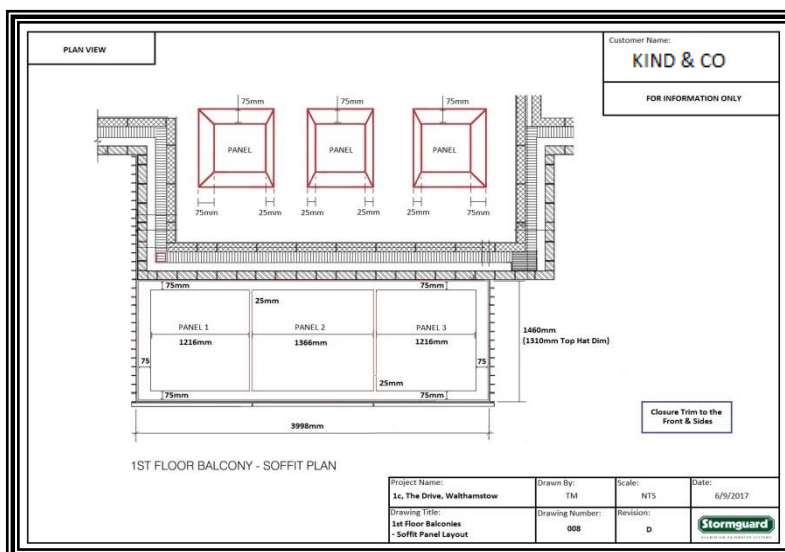
To assist with this project Stormguard Rainwater offered on site assistance at survey stage to make sure all the components needed to complete the works were accounted for, as well as supplying working drawings to the client for approval, and to aid the installation once the materials had arrived on site.

SPECIFICATION:

Size: Various profiles supplied.

Gauge: 2 & 3mm thick aluminium.

Colour: RAL 7022.



Augustus Mill,
Buckley Street,
Macclesfield. SK11 6UH

TEL: 01625 665096
FAX: 01625 665097

E-Mail: sales@stormguardrainwater.co.uk
Website: www.stormguardrainwater.co.uk