



ALUMINIUM RAINWATER SYSTEMS

## CASE STUDY

EASTCOTE LANE,  
NORTHOLT



At Stormguard Rainwater Systems we were asked to provide aluminium copings to the main roof areas to both blocks along with our aluminium hopper heads and downpipes to drain these areas. The client was very impressed with the finished works and subsequently asked if we could supply the aluminium soffits to the low level ceilings above the entrance ways. We were more than happy to help and came back to site to complete the necessary surveys of the areas. All of these profiles were expertly installed across both blocks.

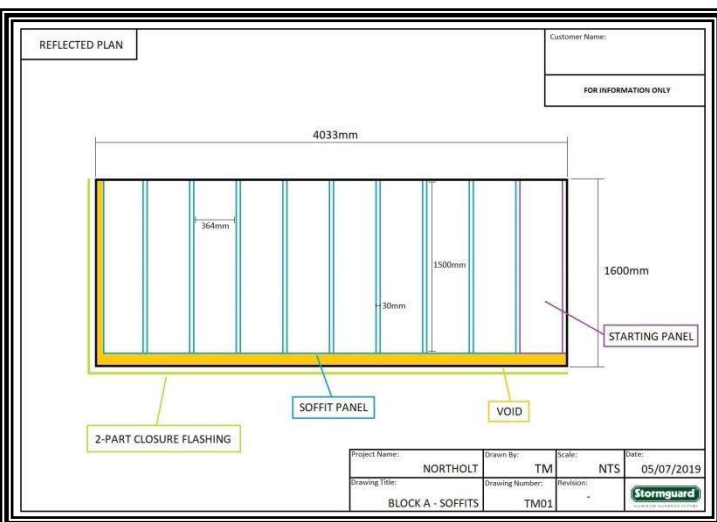
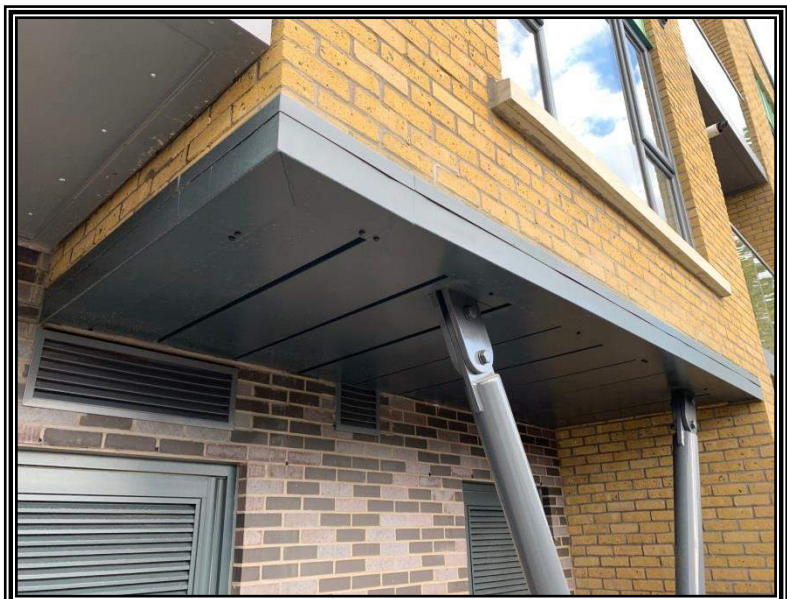
To assist our customer with this project Stormguard Rainwater offered on site assistance at survey stage to make sure all the components needed to complete the works were accounted for, as well as supplying working drawings to the client for approval, and to aid the installation once the materials had arrived on site.

### SPECIFICATION:

'Eclipse' coping system to main roofs.

102mm diameter swaged rainwater pipes.

2mm thick aluminium top hat soffit panels.



ALUMINIUM RAINWATER SYSTEMS

Augustus Mill, Buckley Street, Macclesfield, Cheshire, SK11 6UH  
Tel: 01625 665096 Fax: 01625 665097

Email: [rainwatersales@stormguard.co.uk](mailto:rainwatersales@stormguard.co.uk)



ALUMINIUM RAINWATER SYSTEMS